

# Identification of student risk, receptivity and outreach prioritization

COLLEGE STUDENT INVENTORY™ SUMMARY RESULTS, FALL

COHORT

N=   
CSI Completion rate

incoming students

## 1 Are our students more or less at risk than their peers nationally?

## 2 Are our students more/less receptive to assistance?

**KEY TO INTERPRETING RESULTS:**

**HIGHER RISK**  
Mean scores >50<sup>th</sup> percentile

**LOWER RISK**  
Mean scores <50<sup>th</sup> percentile

National Mean is 50<sup>th</sup> Percentile

Campus results below are mean percentile scores.

**LOWER RISK**  
Mean scores >50<sup>th</sup> percentile

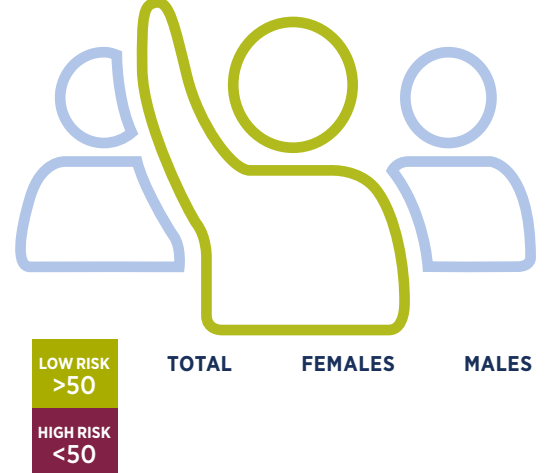
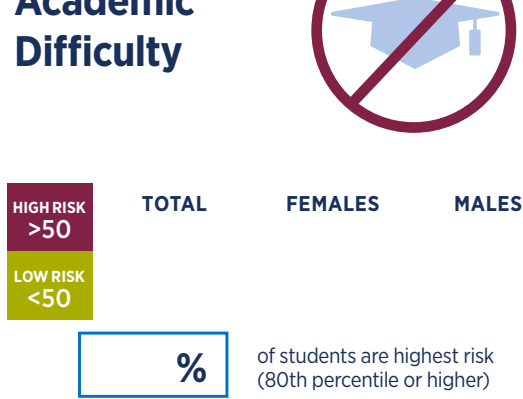
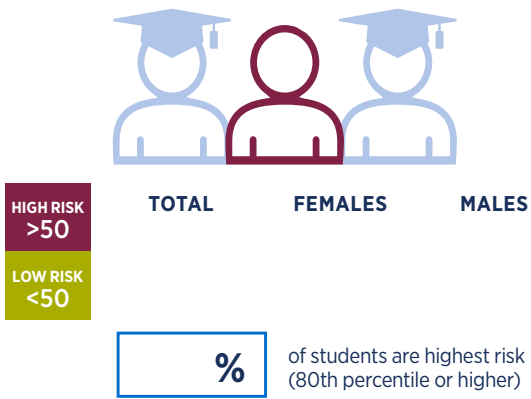
**HIGHER RISK**  
Mean scores <50<sup>th</sup> percentile

National Mean is 50<sup>th</sup> Percentile

### Overall Risk Index

### Predicted Academic Difficulty

### Receptivity to Institutional Help



### Educational Stress



% of students are most receptive (65th percentile or higher)

## 3 What are some key characteristics of this incoming class?

## Students' Top 10 Requests for Assistance (Get Help/Discuss/Get Info)



Students who plan to work over 20 hours per week.

Students who plan to transfer prior to completing their program/degree.

Students who plan to earn a degree beyond an associate's.

Percent and number of students

80th percentile or above

Percent and number of students

1.	%
2.	%
3.	%
4.	%
5.	%
6.	%
7.	%
8.	%
9.	%
10.	%

The percentage score is based on the number of students whose request for assistance on each item was 6 or higher (in a range of 1-10).

## 4 How are we using this information?

Ways in which we are using these data:

Goals/Outcomes that we have set/achieved (optional):