

Identification of student risk, receptivity and outreach prioritization

COLLEGE STUDENT INVENTORY™ SUMMARY RESULTS, FALL

COHORT

N=
CSI Completion rate

incoming students

1 Are our students more or less at risk than their peers nationally?

2 Are our students more/less receptive to assistance?

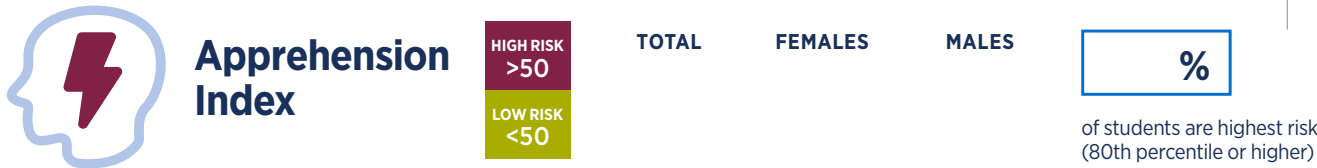
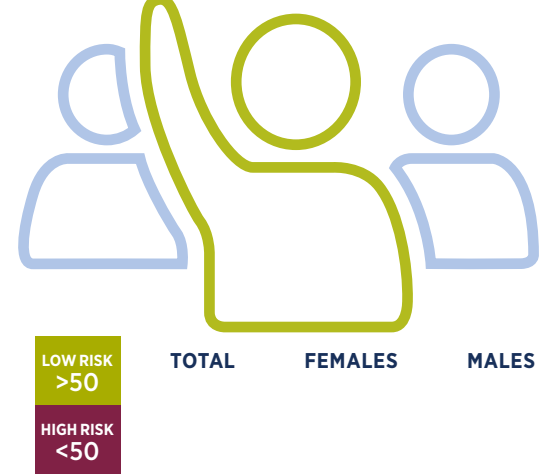
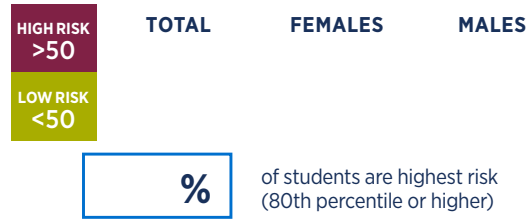
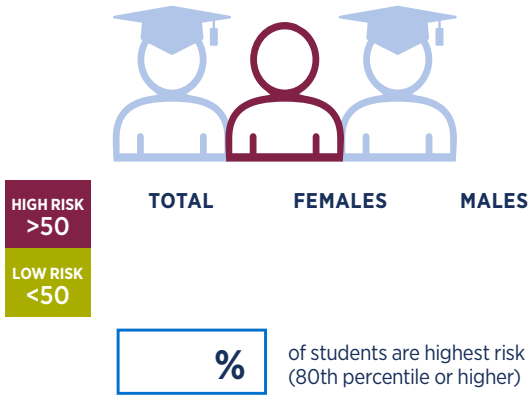
KEY TO INTERPRETING RESULTS: **HIGHER RISK** Mean scores >50th percentile
LOWER RISK Mean scores <50th percentile
 Campus results below are mean percentile scores.

LOWER RISK Mean scores >50th percentile
HIGHER RISK Mean scores <50th percentile
 Campus results below are mean percentile scores.

Overall Risk Index

Acknowledged Academic Needs Index

Receptivity Index



% of students are most receptive (65th percentile or higher)

3 What are some key characteristics of this incoming class?

Students' Top 10 Requests for Assistance (Get Help/Discuss/Get Info)

Students who plan to work over 20 hours per week.

Percent and number of students

Students who plan to transfer prior to completing their program/degree.

80th percentile or above

First-Generation Students

Percent and number of students

1.	%
2.	%
3.	%
4.	%
5.	%
6.	%
7.	%
8.	%
9.	%
10.	%

The percentage score is based on the number of students whose request for assistance on each item was 6 or higher (in a range of 1-10).

4 How are we using this information?

Ways in which we are using these data:

Goals/Outcomes that we have set/achieved (optional):