

RNL ENGAGEMENT CENTER MANAGER

RNL Engagement Center Manager

Engagement Center Management (ECM) is the most geographically diverse full-time career opportunity at RNL.

Engagement Center Managers (ECMs) are immersed in professional development on day one. All managers complete a multi-week, comprehensive training class that allows for both classroom and field instruction. *You will learn something every day!*

Relocation assistance is available to those who relocate for the opportunity; the relocation stipend is paid directly to the ECM to use as needed (moving van, airfare, or deposit—your choice!).

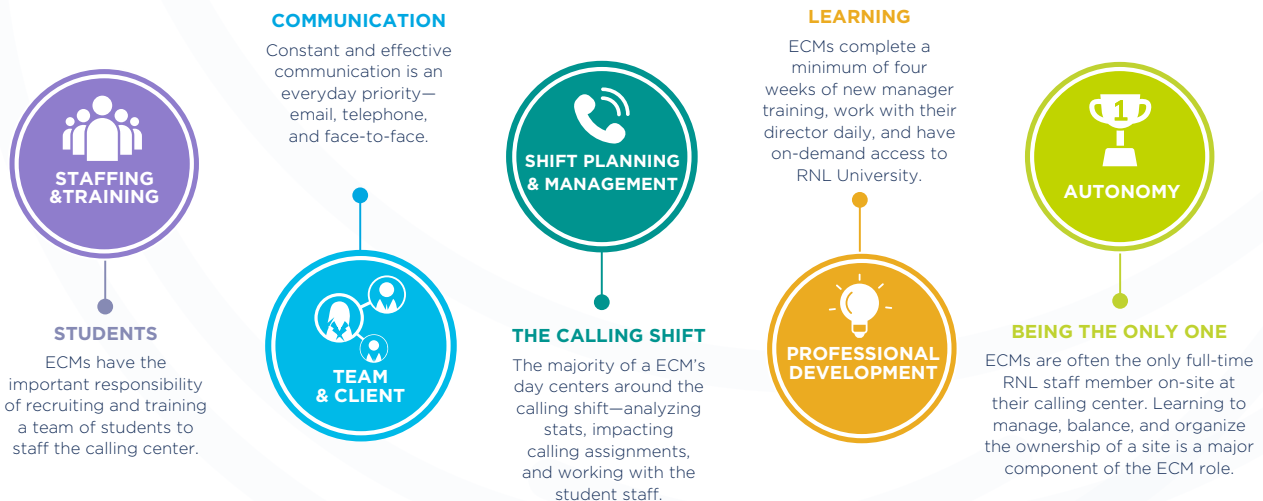
The Engagement Center Manager role is available in a variety of locations throughout North America, the majority of opportunities offer placement at one institution working to strengthen and grow constituent engagement for the college or university. Engagement Center Manager Floater roles are occasionally available, offering non-stop travel for interim management coverage. With programs throughout the United States and Canada, *the opportunities are broad.*

There is considerable autonomy within the Engagement Center Manager role. ECMs are often the only full-time RNL staff member on-site. Surrounded by clients and students on-site, learning to include and utilize remote colleagues and resources is an invaluable tool for successful ECMs.

Math. Love it or like it, math is a large part of the ECM role. Engagement Center Managers are challenged daily to set goals, forecast program performance, and understand metrics. We give you the tools you need to be efficient and resourceful with improving your understanding of the numbers.

The schedule for an Engagement Center Manager is most often Sunday through Thursday. ECMs usually arrive by midday and leave after the evening shift wraps. In the majority of our on-campus centers, an Engagement Center Manager maintains a daily 12:30–9:30 p.m. schedule.

BEING AN ENGAGEMENT CENTER MANAGER



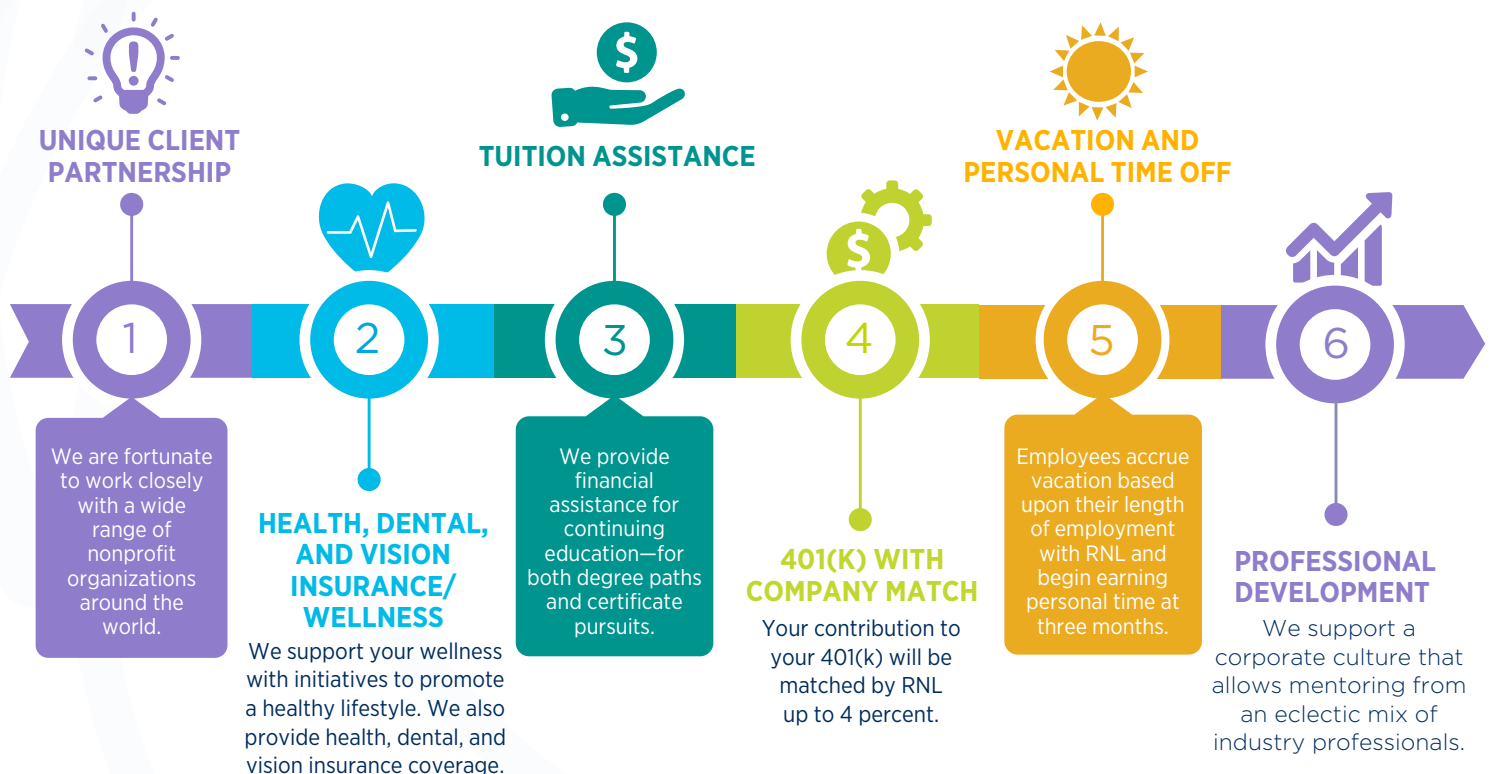
AJ Pennington

Senior Director, Talent Acquisition
AJ.Pennington@RuffaloNL.com

Visit RuffaloNL.com/Careers

RNL ENGAGEMENT CENTER MANAGER

THERE ARE A LOT OF REASONS TO WORK AT RNL



ABOUT RNL

RNL is the leading provider of comprehensive multichannel enrollment management and fundraising management services and software for colleges and universities. With more than 60 years of experience and long-standing client relationships, RNL serves as a trusted partner to institutions and other nonprofits around the world ranging from small private liberal arts colleges to large state universities. Our mission is to make colleges, universities, and nonprofits successful and vibrant through inspired and relevant engagement.

Visit RuffaloNL.com/Careers