

Identification of student risk, receptivity and outreach prioritization

COLLEGE STUDENT INVENTORY™ SUMMARY RESULTS, FALL

COHORT

N=
CSI Completion rate

incoming students

1 Are our students more or less at risk than their peers nationally?

2 Are our students more/less receptive to assistance?

KEY TO INTERPRETING RESULTS:

HIGHER RISK
Mean scores >50th percentile

LOWER RISK
Mean scores <50th percentile

National Mean is 50th Percentile

Campus results below are mean percentile scores.

LOWER RISK
Mean scores >50th percentile

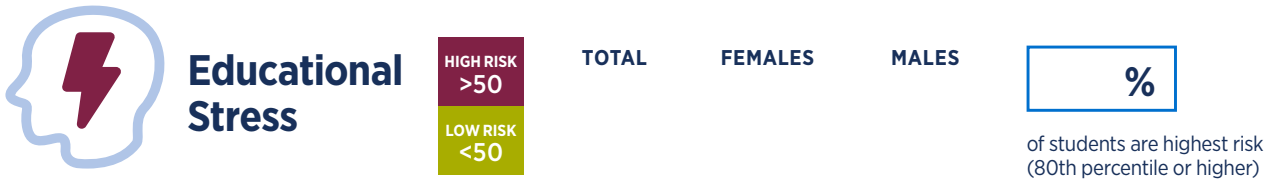
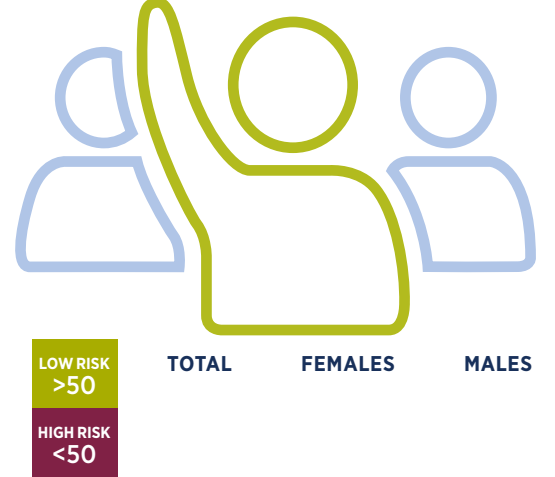
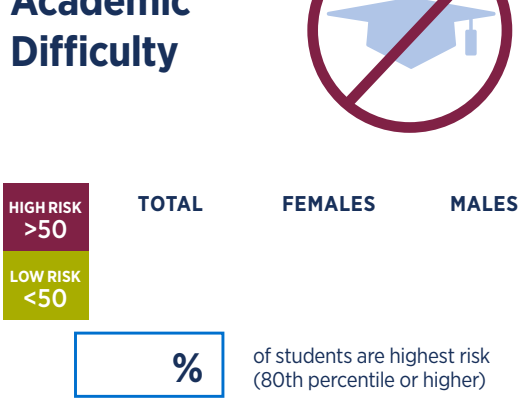
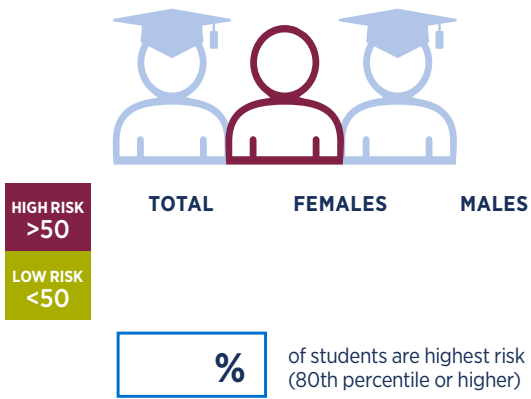
HIGHER RISK
Mean scores <50th percentile

National Mean is 50th Percentile

Overall Risk Index

Predicted Academic Difficulty

Receptivity to Institutional Help



% of students are most receptive (80th percentile or higher)

3 What are some key characteristics of this incoming class?

Students' Top 10 Requests for Assistance (Get Help/Discuss/Get Info)



Students who plan to work over 20 hours per week.

Percent and number of students



Students who plan to transfer prior to completing their program/degree.

80th percentile or above



Students who plan to earn a degree beyond an associate's.

Percent and number of students

1.	<input type="text"/>	%
2.	<input type="text"/>	%
3.	<input type="text"/>	%
4.	<input type="text"/>	%
5.	<input type="text"/>	%
6.	<input type="text"/>	%
7.	<input type="text"/>	%
8.	<input type="text"/>	%
9.	<input type="text"/>	%
10.	<input type="text"/>	%

The percentage score is based on the number of students whose request for assistance on each item was 6 or higher (in a range of 1-10).

4 How are we using this information?

Ways in which we are using these data:

Goals/Outcomes that we have set/achieved (optional):